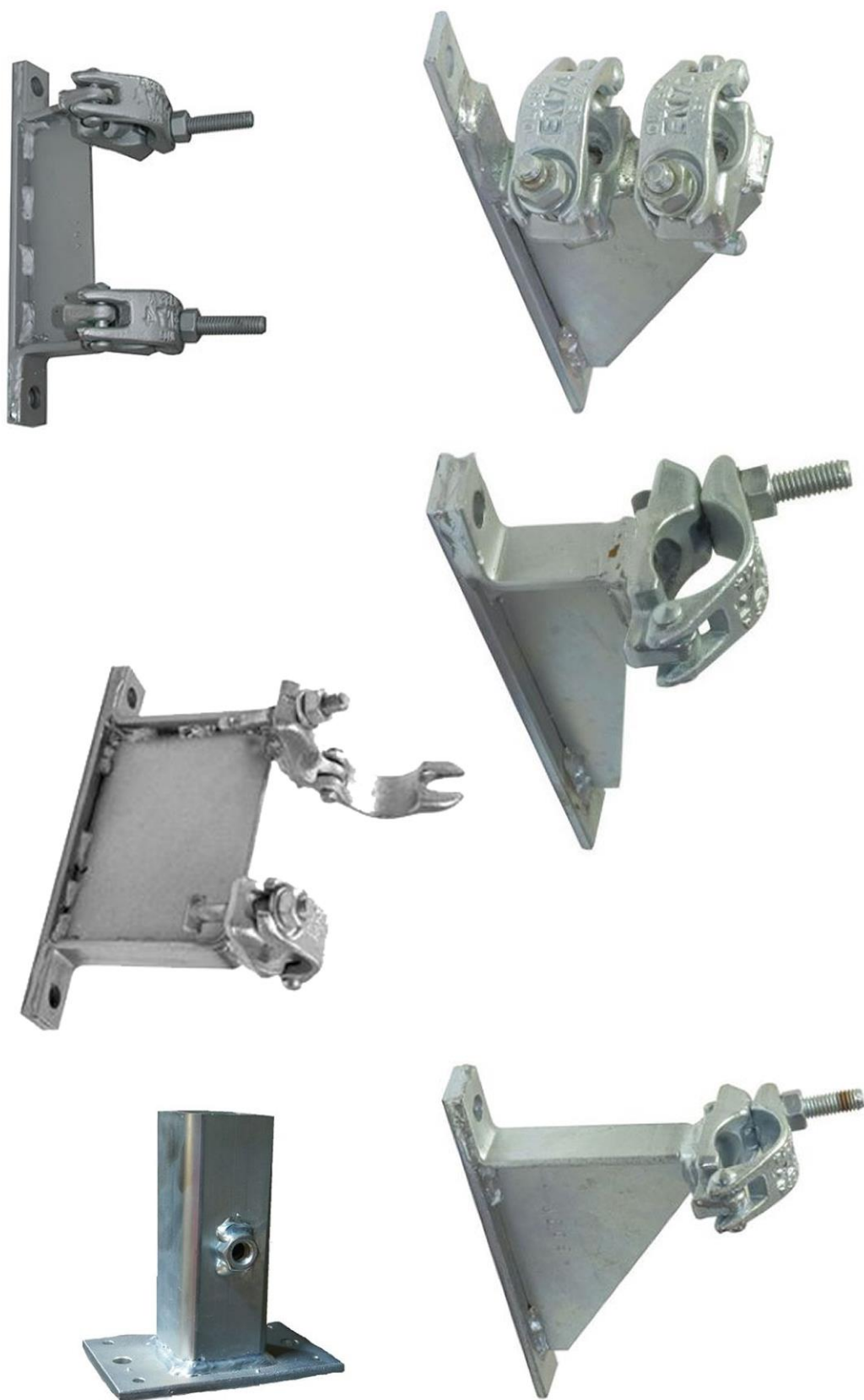


Delta

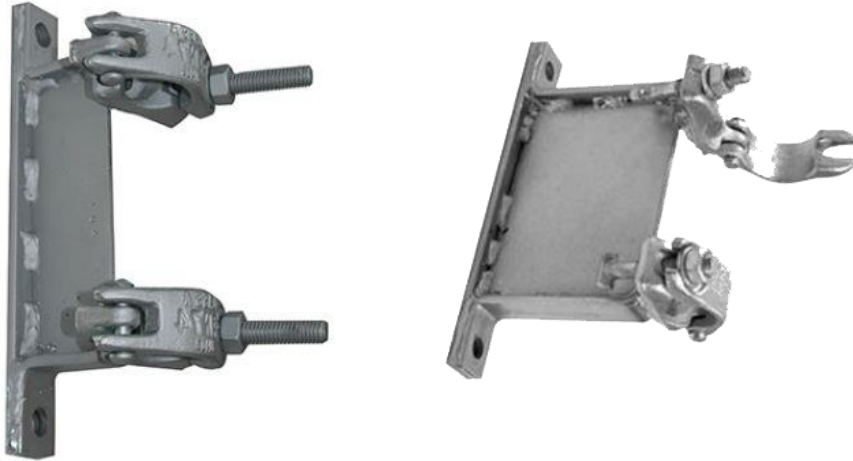
Edge Protection



☎ 0151 678 7997
✉ sales@deltagb.com

www.scaffolding-direct.co.uk | www.tubeclampsdirect.co.uk | www.britishscaffold.com

Twin Support Edge Protection Fixing, 140mm & 80mm



The information given herein is formulated in accordance with the guidance given in TG4/11.

	Base Material						
	C20/25 Conc 30 N/mm ²	Eng. Brick 70 N/mm ²	Fletton 20 N/mm ²	Butterfly 20 N/mm ²	C16 Eng. Timber	Z35 Steel 3mm thick	Z35 Steel >5mm
When used with FIXING TYPE							
Two 12x80 Coach Screw in 14mm plug	6.1	6.1	3.5	3.5	x	x	x
Two 12x80 Coach Screw only	x	x	x	x	6.1	x	x
Two 8x60 Coach Screw only	x	x	x	x	3.5	x	x
Two 12mm CSB Masonry Screw	6.1	6.1	6.1	3.5	x	x	x
Resin Socket with M12 HT Setscrew	6.1	6.1	6.1	3.5	x	x	x
M12 HT Bolt/ Nut/ Square Washer	x	x	x	x	6.1	3.5	6.1
Two M8 Box Bolt Anchors	x	x	x	x	x	6.1	6.1
Load Class According to TG20	Light	Standard	Heavy				

This includes set figures for Light, Standard & Heavy Duty Loads, with the appropriate safety factors Figures given above are maximum allowable loads, given for the exact application with the named fixing.

Preliminary tests must be carried out to ascertain allowable loads before the use of the bracket and/or fixing in any other application.

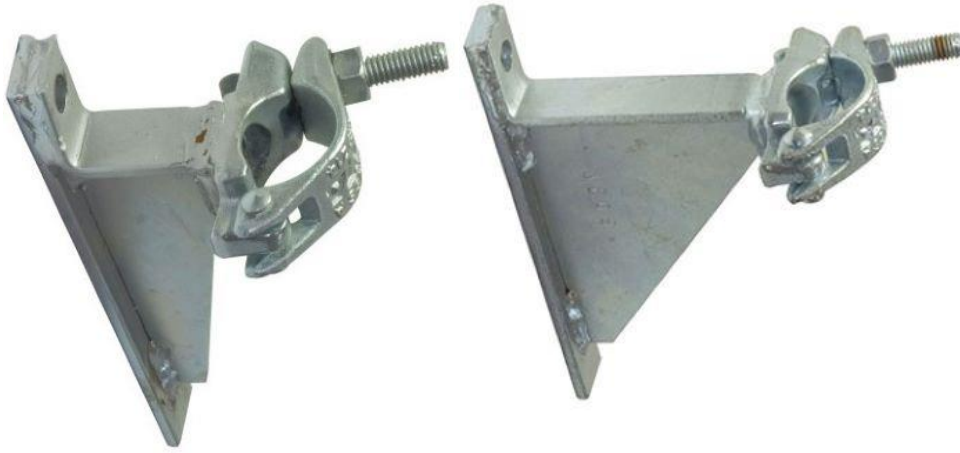
NB - Recommended loads are limited by strength & suitability of base material and structure.

Recommended Shear load Vrec is 13.0Kn, when used with M12x75 Concrete Screw Bolts of embedment 60mm in concrete class C20/25. Suitability tests should be performed for any other base material or where the strength is unknown. Recommended loads are limited by suitability of base material and structure.

Quality Assurance

The drop forged fitting has been manufactured and tested according to BS1139 – EN74. It has been accepted as Class A/B for behaviour under load. The brackets are batch tested and MPI inspected for performance. The ultimate weld strength has been tested in excess of 40kN.

Single Support Edge Protection Fixing, 140mm & 90mm



Distance from the facing wall to tube face:

SCB13 = 140mm

SCB15 = 90mm

Load Data

Recommended Tensile load is 8.6kN

Recommended Shear load is 18.0kN

When used with M12x75 Concrete Screw Bolts of embedment 60mm in concrete class C20/25.

Suitability tests should be performed for any other base material or where the strength is unknown.

Recommended loads are limited by suitability of base material and structure. Quality Assurance The drop forged fitting has been manufactured and tested according to BS1139 – EN74. It has been accepted as Class A/B for behaviour under load. The brackets are batch tested and MPI inspected for ultimate performance. The ultimate weld strength has been tested in excess of 40kN.

Horizontal Edge Protection Fixing



Load Data

MAXIMUM Recommended Tensile load Nrec is 12.2kN

MAXIMUM Recommended Shear load Vrec is 12.2kN

When used with M12x100 CS Bolts of embedment 90mm in concrete class C20/25.

Suitability tests should be performed for any other base material or where the strength is unknown.

Recommended loads are limited by suitability of base material and structure.

Loads are limited by the performance of the EN74-A fitting

Quality Assurance

The drop forged fitting has been manufactured and tested according to EN74. It has been accepted as Class A for behaviour under load.

The brackets are batch tested and MPI inspected for ultimate performance. The ultimate weld strength has been tested in excess of 40kN.